



LUSTY  
GLAZE

---

*Beach*

---

CORNWALL

---

- 4 | BEACH LIFE
- 6 | ANCHOR DOWN
- 8 | SEA IT CLEARLY
- 12 | MAKE WAVES
- 14 | DIVE IN
- 16 | BE SHORE TO RELAX
- 18 | WHERE IN THE WORLD?



## LUSTY GLAZE

Located in a private, sheltered cove on the North Cornish coast, Lusty Glaze Beach is known for its towering cliffs, white sands, brilliant surf and panoramic sunsets. Couple all of this with an incredible reputation for food and drink, an onsite water sports centre and the yearly line-up of stellar gigs, and you've got yourself the backdrop for a corporate event to out do all others.





## BEACH LIFE



Situated at the bottom of 133 steps, Lusty Glaze Beach with its restaurant, bar and cafe, is a quiet oasis just minutes from the harbour town of Newquay. Available for partial or private hire, and with a maximum capacity of 3,500 people, this is a truly versatile and unique venue for any corporate event.

Whether you're looking to host an evening soiree, a team-building weekend away or anything else in-between, our experienced Events Team will be on hand to help you to arrange every last detail.



## ANCHOR DOWN

### MARQUEE



With a view out to sea and space for up to [x] people, our custom built marquee can be transformed to suit the needs of any event.

### DRIFTWOOD CAFE



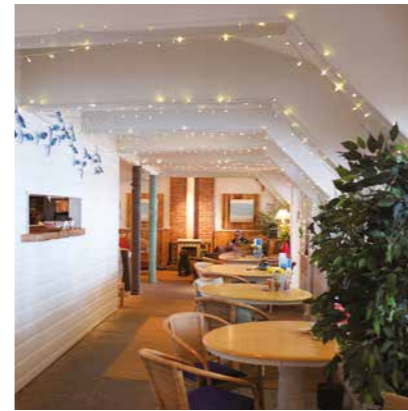
The Driftwood Cafe serves up all of those little treats the beach wouldn't be the same without, as well as boasting an exclusive rooftop deck area from which to watch the sun setting, wine in hand.

### BAR



Select your favourite tippie from a fully stocked bar which includes local ciders, Cornish ales and a choice of speciality gins. Or why not ask our talented mixologist to create something a little bit special?

### RESTAURANT



Our restaurant serves sophisticated, seasonal dishes in a relaxed environment. Our talented Head Chef will be only too happy to work with you in creating a bespoke menu for your event.

### BEACH LOUNGE



If relaxing on the sand wasn't enough, our beach lounge has giant cushions, comfy sofas, sea views and is fully equipped with a beautiful beach bar. Think Moroccan luxury with Cornish charm.

### TOP DECK



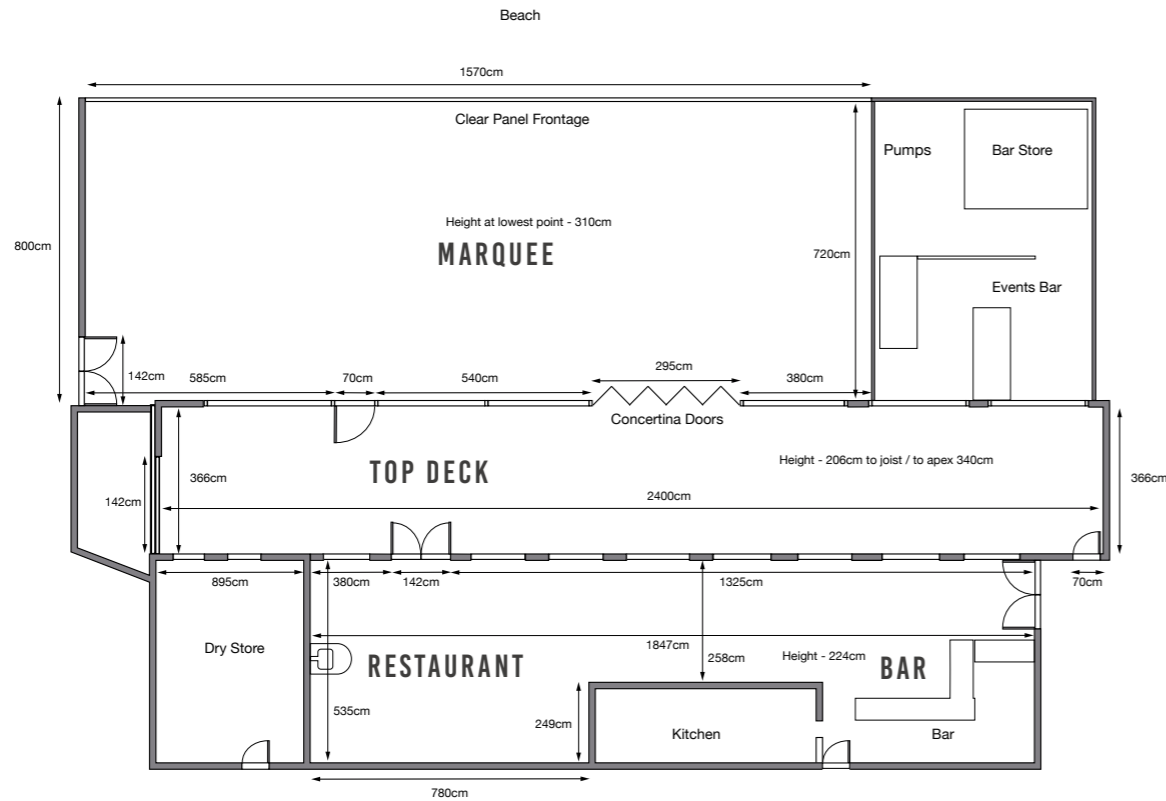
This is wining and dining with a view! The Top Deck can play host to meetings or conferences, or be used as a handy extension of the restaurant.

# SEA IT CLEARLY

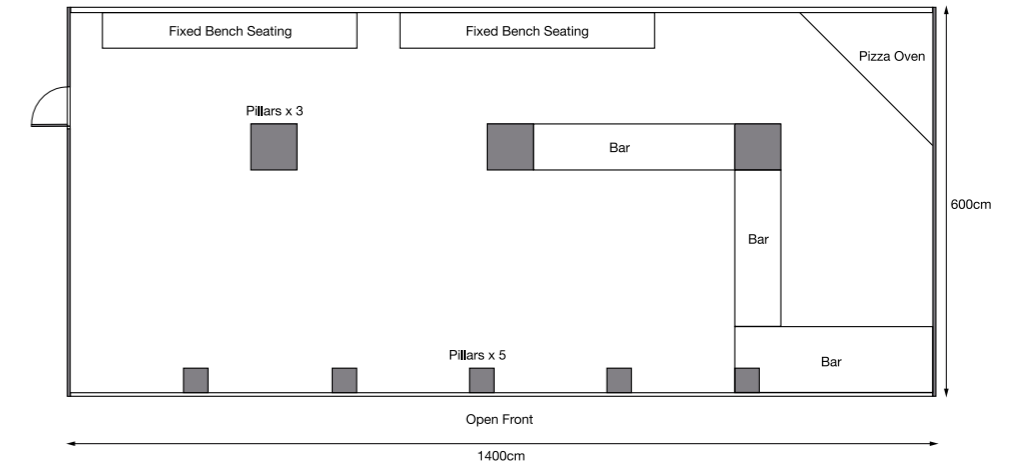


In order to help you visualise your big event, we have provided floor plans for each area of Lusty Glaze Beach. If you have any questions about how these areas could be adapted, please contact our Events Team.

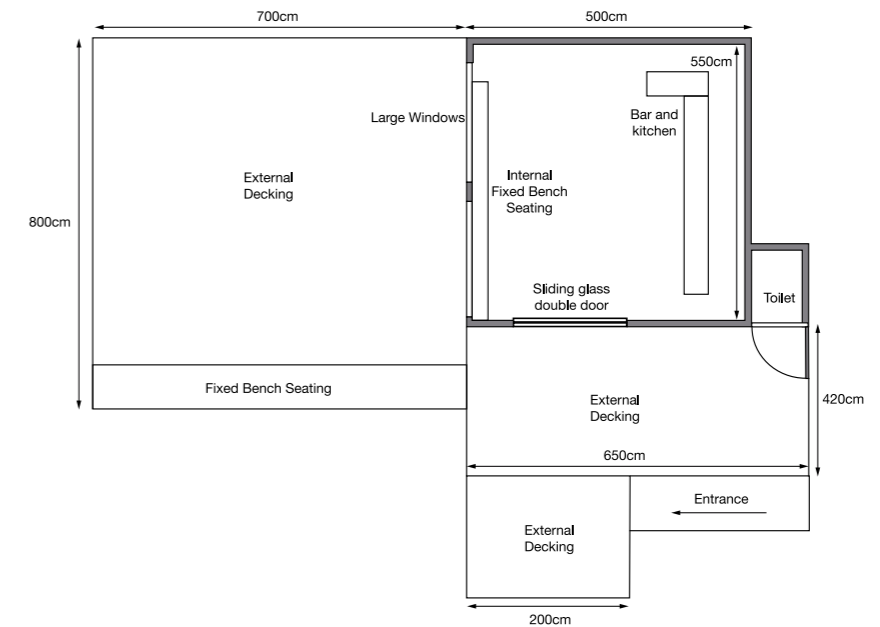
## MARQUEE | TOP DECK | RESTAURANT | BAR



## BEACH LOUNGE



## DRIFTWOOD CAFE







## MAKE WAVES



Our incredible location offers the perfect chance to try something new. For the thrill-seeker, the Lusty Glaze Adventure Centre offers a range of activities including jet-skiing, surf lessons and abseiling. If staying on solid ground is more your thing, you could spark up the rivalry with a game of tag-rugby, cricket or beach volleyball.

Aiming for something a little more relaxed? Try beach games, yoga or simply snoozing in the sunshine. You could even hire a live band and turn the beach into a dance floor — the scope for creativity is endless!



# DIVE IN!

Whilst our reputation for sumptuous seafood is something to be rivalled, our Head Chef and his team can create delicious dishes to suit all tastes and diets. In the past, we've served up everything from a laid back 'surf and turf' barbecue to a hearty Spanish paella, and even a seven-course, fine dining experience.

Alternatively, why not do something different and get everyone involved with a lesson in Cornish ale or a cocktail making class? Your wish is our command!





## BE SHORE TO RELAX



We're close enough to Newquay that all of the amenities your guests could ever need will be close at hand, yet far enough to escape the hustle and bustle of the main town.

With extensive local knowledge and an unrivalled list of suppliers, our Events Team will tailor make your experience, and can arrange accommodation and transport for all of your guests.

## WHERE IN THE WORLD?



**PLANE** A 14 minute drive from Newquay Airport, with direct flights to major UK cities.

**TRAIN** A 10 minute walk or 3 minute drive from Newquay Station.

**CAR** Conveniently located just 15 minutes from the A30, the main arterial road into Cornwall.



📞 01637 872 444 ✉ info@lustyglaze.co.uk

Lusty Glaze Beach | Lusty Glaze Road

Newquay | Cornwall | TR7 3AE

[www.lustyglaze.co.uk](http://www.lustyglaze.co.uk)